



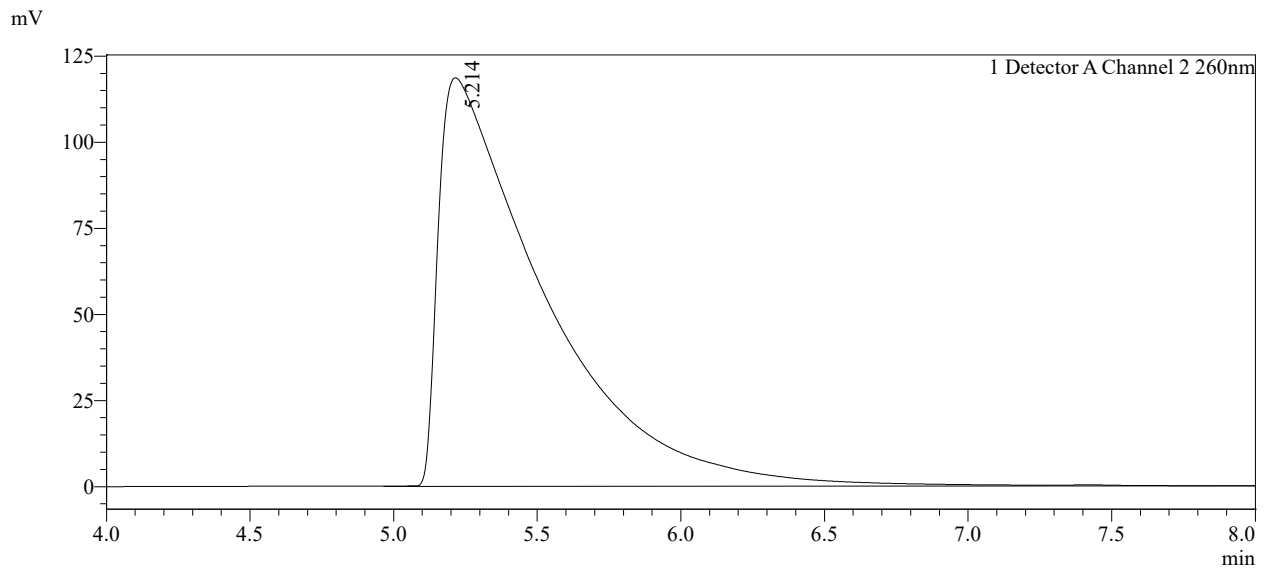
SHIMADZU  
LabSolutions

# Analysis Report

## Sample Information

Sample Name : Nicotine salicylate base 72mg/ml Vg100  
 Sample Type : Unknown  
 Injection Volume : 2 uL  
 Date Processed : 20.04.2021 13:16:58

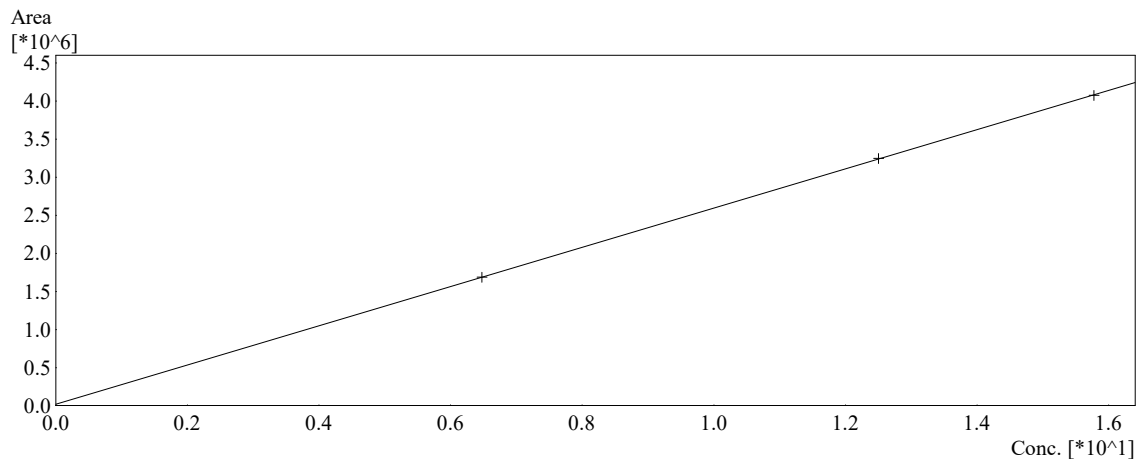
## Chromatogram



## Calibration Curve

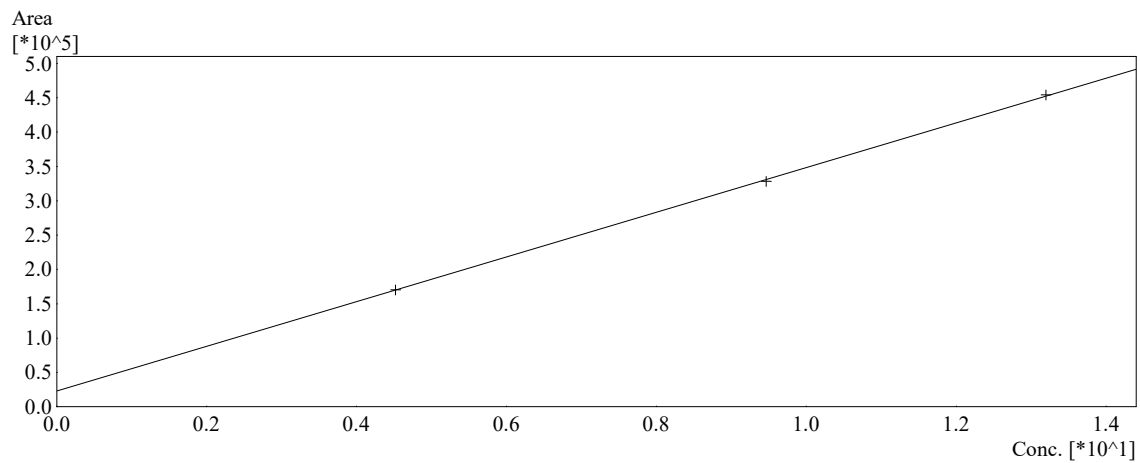
Name : Nicotine  
 Quantitative Method : External Standard  
 Function :  $f(x)=257718*x+18650.5$   
 $Rr1=0.9999886$   $Rr2=0.9999771$   $RSS=6.874763e+006$   
 FitType : Linear  
 Detector Name : Detector A

#	Conc.(Ratio)	MeanArea	Area
1	6.4774	1686655	1686655
2	12.5025	3248115	3248115
3	15.7756	4078305	4078305



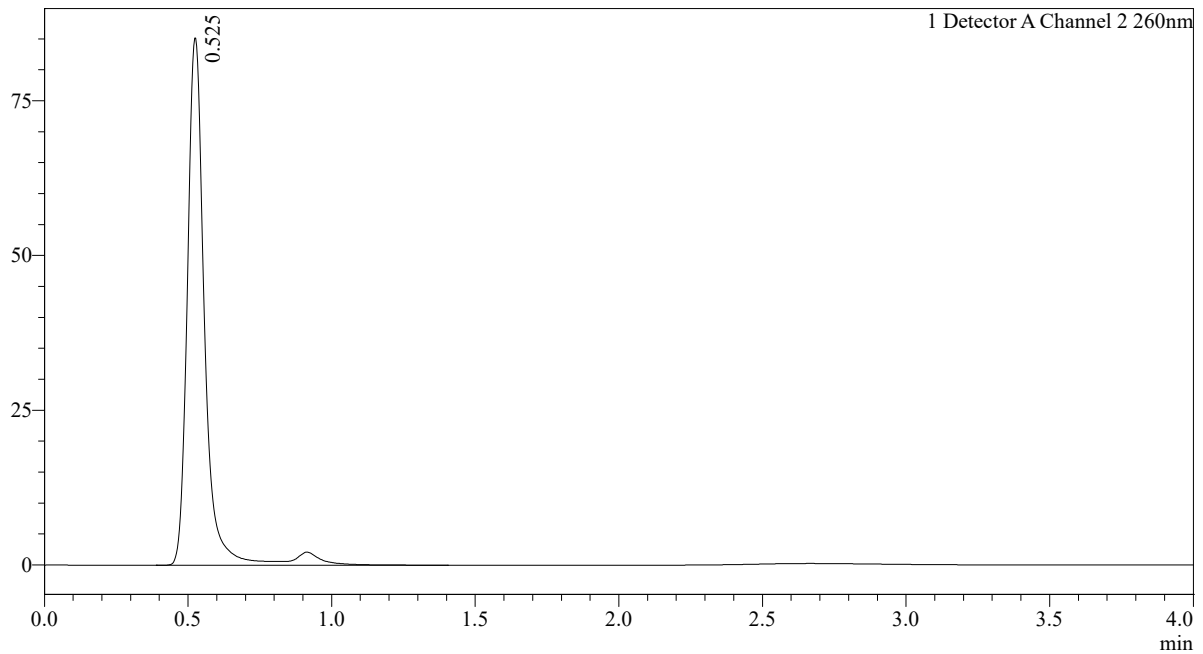
Name : Salicylic Acid  
Quantitative Method : External Standard  
Function :  $f(x)=32533.3*x+23038.0$   
Rr1=0.9999059 Rr2=0.9998118 RSS=9.627272e+005  
FitType : Linear  
Detector Name : Detector A

#	Conc.(Ratio)	MeanArea	Area
1	4.5193	170565	170565
2	9.4666	328586	328586
3	13.1978	454339	454339



## Chromatogram

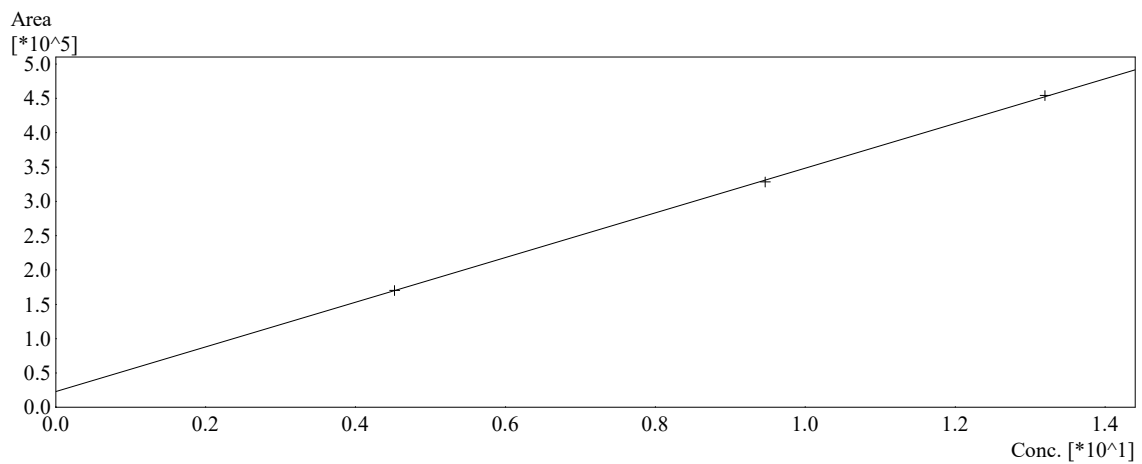
mV



## Calibration Curve

Name : Salicylic Acid  
 Quantitative Method : External Standard  
 Function :  $f(x)=32533.3*x+23038.0$   
 $Rr1=0.9999059$   $Rr2=0.9998118$   $RSS=9.627272e+005$   
 FitType : Linear  
 Detector Name : Detector A

#	Conc.(Ratio)	MeanArea	Area
1	4.5193	170565	170565
2	9.4666	328586	328586
3	13.1978	454339	454339



**Peak Table**

Detector A Channel 2 260nm

Peak#	Ret. Time	Area	Height	Conc.	Unit	Name
1	0.525	355175	85187	62.670	mg/L	Salicylic Acid
2	5.214	3057704	118583	72.388	mg/L	Nicotine
Total		3412879	203770			