



SHIMADZU  
LabSolutions

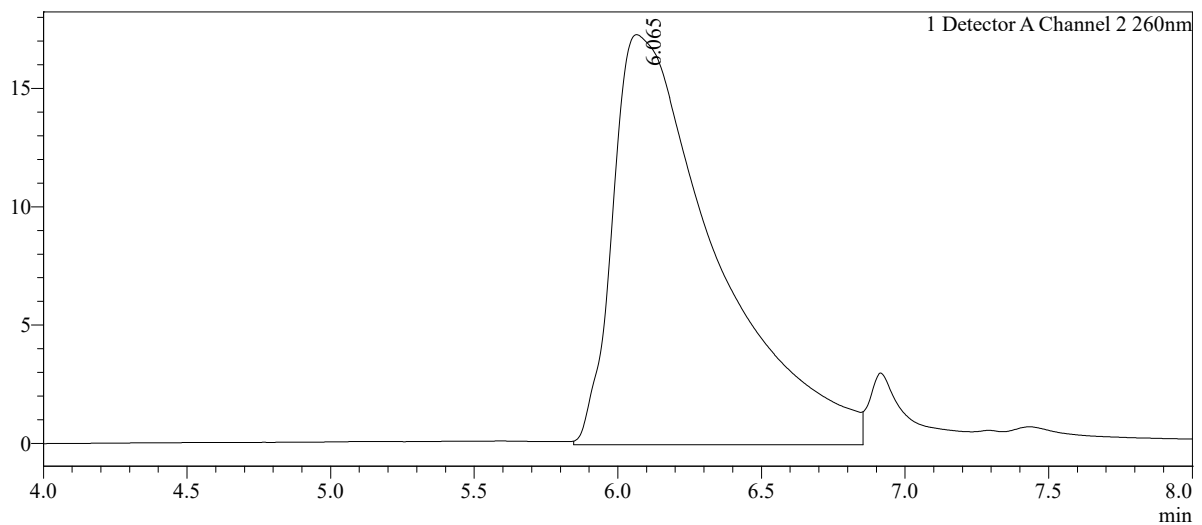
# Analysis Report

## Sample Information

Sample Name : Strawberry Mint 8mg/g  
 Sample Type : Unknown  
 Injection Volume : 1 uL  
 Date Processed : 21.06.2021 10:59:30

## Chromatogram

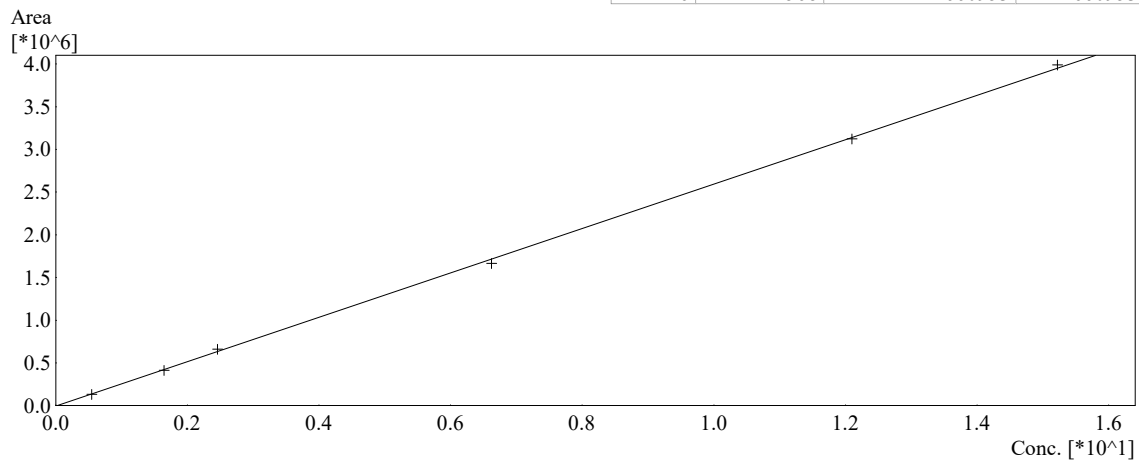
mV



## Calibration Curve

Name : Nicotine  
 Quantitative Method : External Standard  
 Function :  $f(x)=259866*x-7561.28$   
 $Rr1=0.9997618$   $Rr2=0.9995236$   $RSS=8.729865e+008$   
 FitType : Linear  
 Detector Name : Detector A

#	Conc.(Ratio)	MeanArea	Area
1	6.62	1664784	1687619
2	12.096	3122732	3122732
3	15.2213	3987707	3987707
4	0.5478	133833	133833
5	1.6469	412545	412545
6	2.4568	660953	660953



**Peak Table**

Detector A Channel 2 260nm

Peak#	Ret. Time	Area	Height	Conc.	Unit	Name
1	6.065	431996	17329	7.689	mg/g	Nicotine
Total		431996	17329			